

Case Study

- + Electrical & Sustainable Energy
- + Mechanical & Renewables

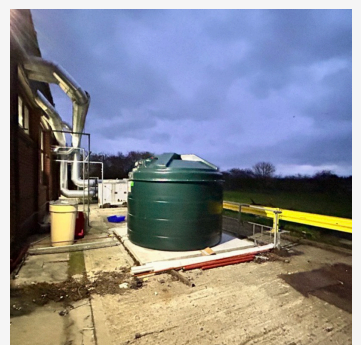
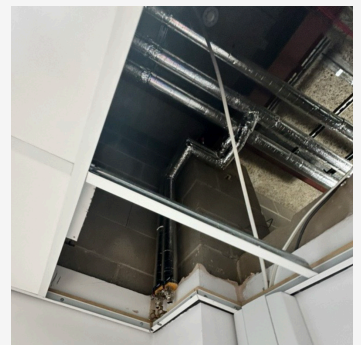


ISS Chelmsford

SOL Services delivered a complex mechanical and electrical (MEP) upgrade at the DEFRA site in Chelmsford. The project involved extensive system replacements and upgrades, alongside resolving design and specification challenges throughout delivery. Despite these complexities, the project was completed successfully, meeting both programme and budget expectations.

Client Benefits

- + Fully upgraded and compliant mechanical and electrical infrastructure
- + Improved energy efficiency and system performance through modern plant and controls
- + Safe and environmentally compliant removal and replacement of oil systems
- + Enhanced reliability of heating, cooling, and water services
- + Increased operational control through a new automatic controls system
- + Successful resolution of design and specification challenges without impacting delivery
- + Project completed on time and within budget, with excellent client satisfaction
- + Positive feedback from ISS, particularly recognising the team's ability to manage complexities and deliver a high-quality outcome



Case Study

- + Electrical & Sustainable Energy
- + Mechanical & Renewables



ISS Chelmsford

Services Provided

- + Strip-out of redundant mechanical and electrical services
- + Validation of existing pipework, containment, and cable routes above suspended ceilings
- + Removal of oil, including safe disposal in line with environmental regulations
- + Cleaning, decommissioning, and removal of existing oil tank and associated pipework
- + Electrical testing of existing circuits (EICR)
- + Installation of new small power systems
- + Installation of a new oil-fired boiler
- + New LTHW (Low Temperature Hot Water) system installation
- + Installation of new oil tank and associated pipework
- + Installation of a new DX split system to the ground floor storage area
- + Installation of condensate pipework for DX systems
- + Modifications to domestic hot and cold water services
- + Amendments to above-ground foul drainage systems
- + Installation of a new automatic controls system
- + Associated builders' works, including fire stopping
- + Full testing and commissioning of all systems

